



Frank Boonzaier

Non-Principal Property
Practitioner
Registered with PPRA
(FFC 055 852 1)
072 114 3336
frank@visionprop.co.za

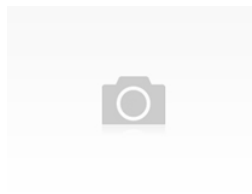
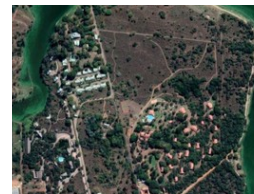
Contact Agents

012 846 3030

Unit 203
First Floor, Lynwood Lane Retail Centre
Lynnwood Road
Equestria
Pretoria
0050



Web Ref ND37



Maji Mazuri

Vacant Land (198)
From R2,590,000 per m²
Size from 5m² to 5m²

Tranquil Bushveld Atmosphere

Maji Mazuri, which is 5.1170ha, is situated on the shores of the Roodeplaat Dam, adjacent to a nature reserve. The area has a subtropical climate with mild winters and summers cooled by a slight breeze of the dam. The aim of the development is to create a tranquil bushveld atmosphere by using the unspoiled nature and view of the dam to create a unique Holiday Wellness Spa and Conference Centre. Maji Mazuri can easily be reached from the N1 freeway and from Zambezi Drive via the R513 and is 21km from the centre of Pretoria.

The property adjoins the Dinokeng Game Reserve.
O R Tambo International Airport is 55km from the development...