



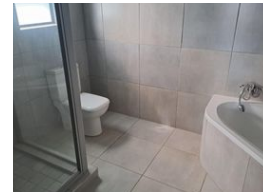
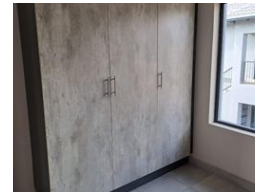
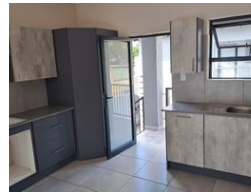
**Frank Boonzaier**  
 Non-Principal Property Practitioner  
 Registered with PPRA (FFC 055 852 1)  
 072 114 3336  
 frank@visionprop.co.za

Contact Agents  
 012 846 3030

Unit 203  
 First Floor, Lynnwood Lane Retail Centre  
 Lynnwood Road  
 Equestria  
 Pretoria  
 0050



Web Ref RL1562



**R1,258,000**

**Monthly Bond Repayment** R12,984.93  
 Calculated over 20 years at 11% with no deposit.

**Transfer Costs** R36,357.00    **Bond Costs** R27,105.00

These calculations are only a guide. Please ask your conveyancer for exact calculations.

 3     2     1

### Brand New Upmarket Transfer cost included

Brand new from the developer

This neat and spacious property is situated in Wolmer, Pretoria North. It is close to popular shopping centers and all major roads.

The property has 3 bedrooms, 2 bathrooms, an open plan living area, modern kitchen and the unit is tiled throughout. There is Garage and 1 carport and visitors parking. It is a modern style simplex. Transfer cost included

This property is ideal for investors. It is also a good investment for first time buyers. Remember first time buyers can qualify for a 100% loan/bond. Cash buyers also welcome Don't miss out. !

### Features

#### Interior

Bedrooms 3  
 Bathrooms 2  
 Recep. Rooms 2

#### Exterior

Garages 1  
 Carports / Parkings 1  
 Pool No

